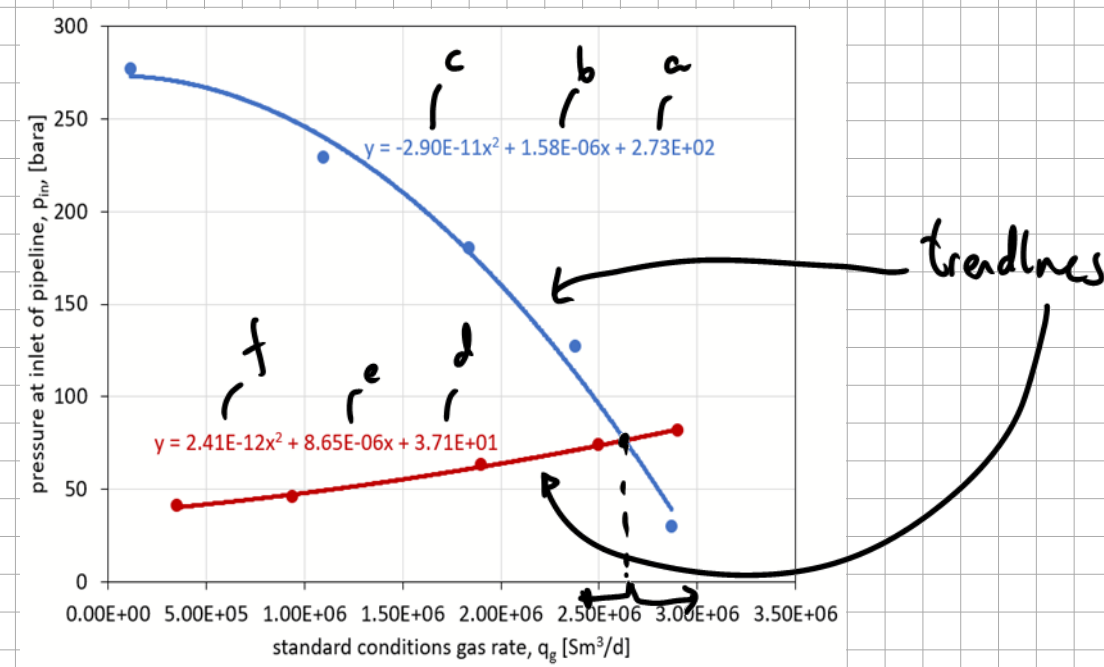
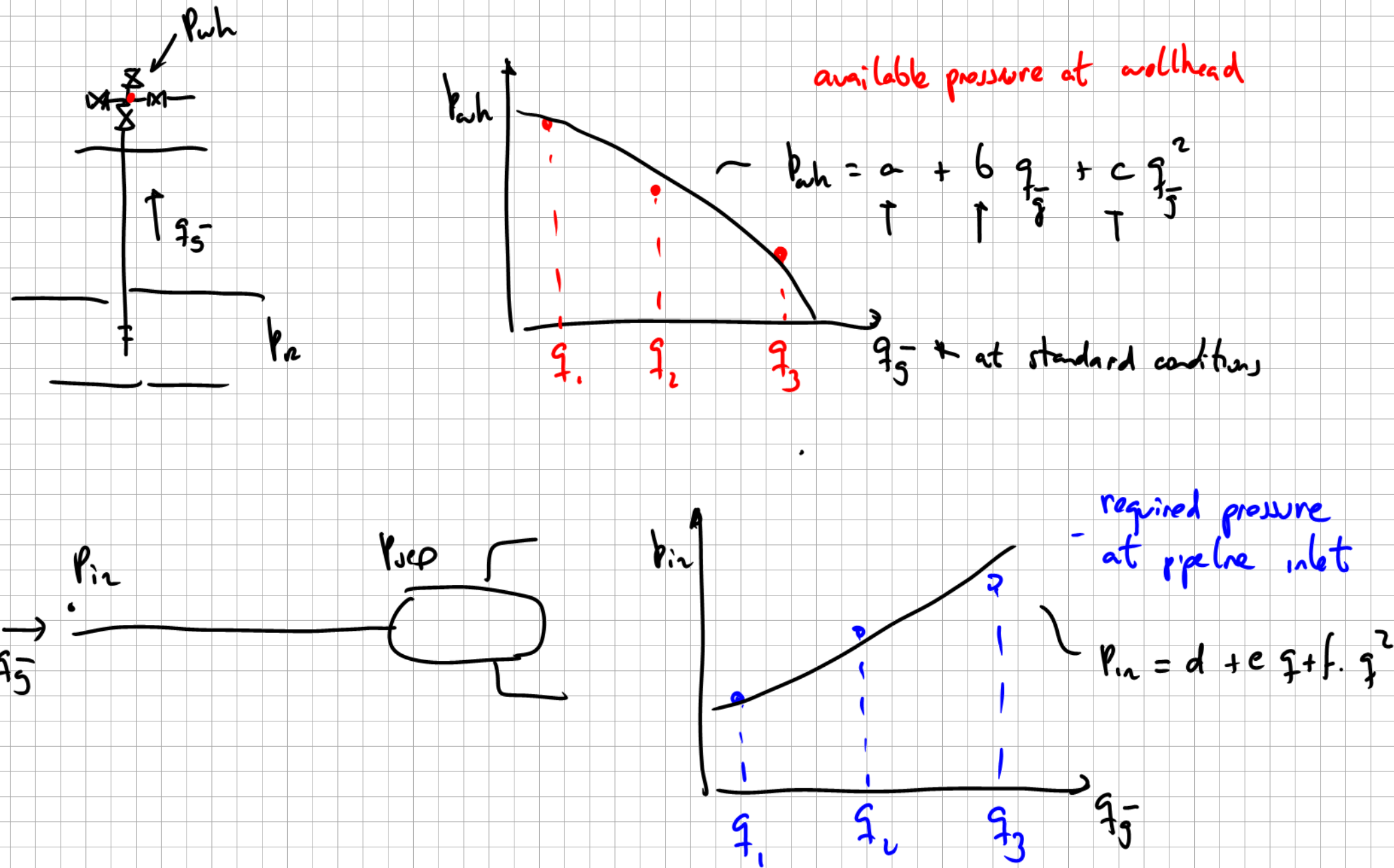


Example

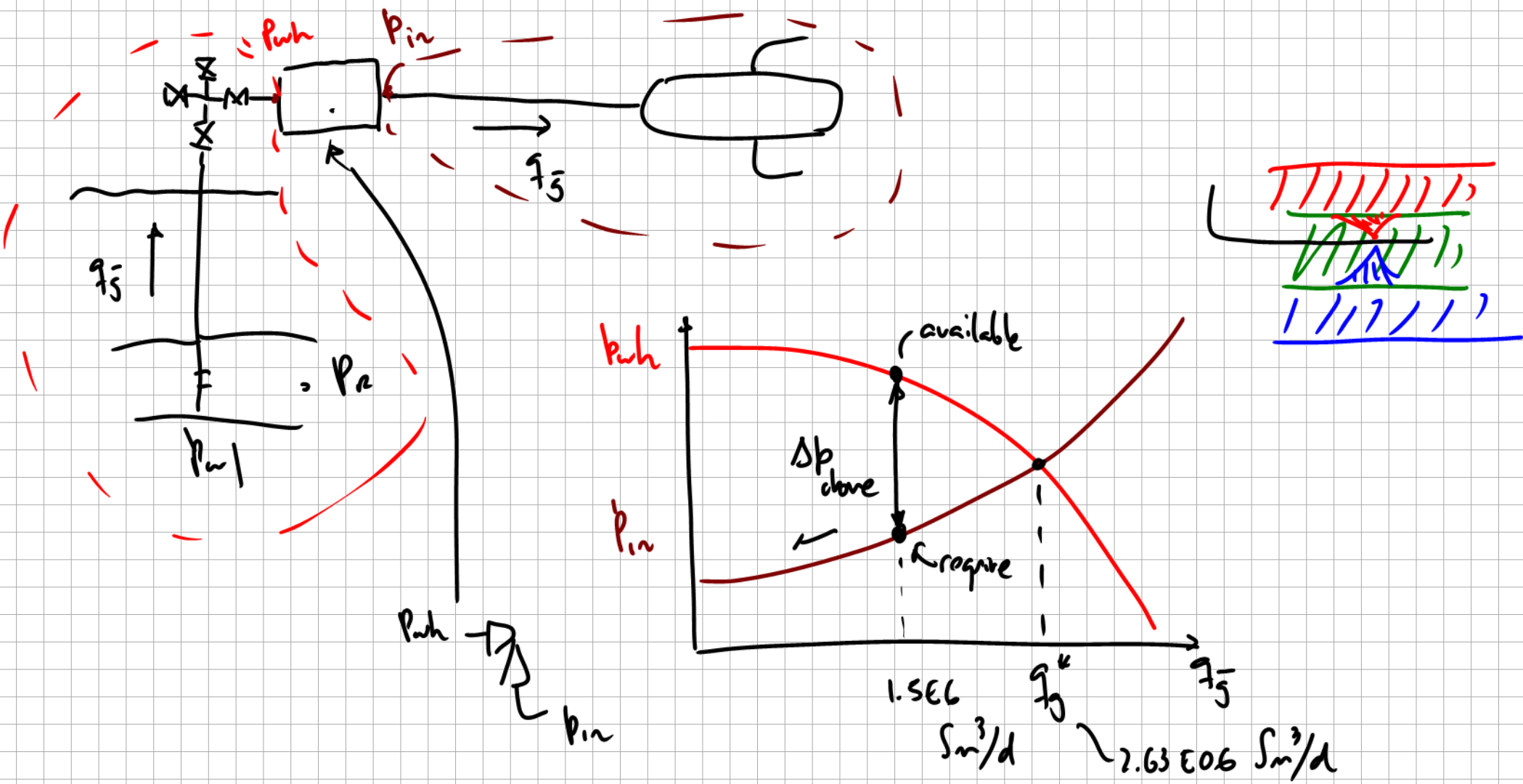
Dry gas production system



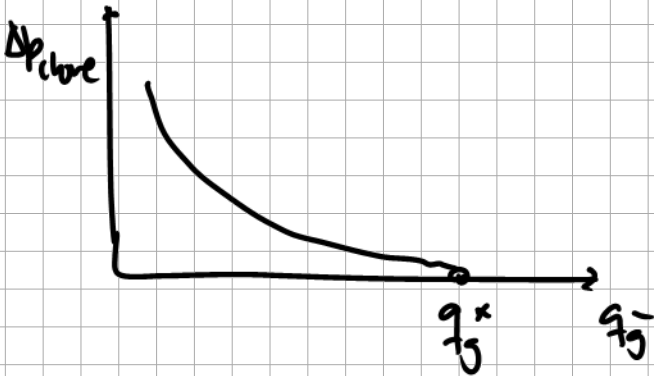
pin (available)						
c	[bara/(Sm3/d) <sup>2</sup> ]	-2.90E-11				
b	[bara/Sm3/d]	1.58E-06				
a	[bara]	2.73E+02				
pin(required)			qg	pin (av)	pin(req)	error
f	[bara/(Sm3/d) <sup>2</sup> ]	2.41E-12	[Sm3/d]	[bara]	[bara]	[bara]
e	[bara/Sm3/d]	8.65E-06	2.63E+06	76.5	76.5	0.0
d	[bara]	3.71E+01				

$p_{in} = 76.5 \text{ bara}$

equilibrium gas rate



qg	p <sub>wh</sub> (av)	p <sub>in</sub> (req)	Deltap
[Sm3/d]	[bara]	[bara]	[bar]
1.50E+06	210.1	55.5	-154.6



what if i need a rate higher than equilibrium



required > avail  
energy must be  
given to fluid

I desire to produce 2.8E06 Sm³/d

qg	p <sub>wh</sub> (av)	p <sub>in</sub> (req)	Deltap
[Sm3/d]	[bara]	[bara]	[bar]
2.80E+06	50.1	80.2	30.2

→ delta p to be provided by compressor cell head