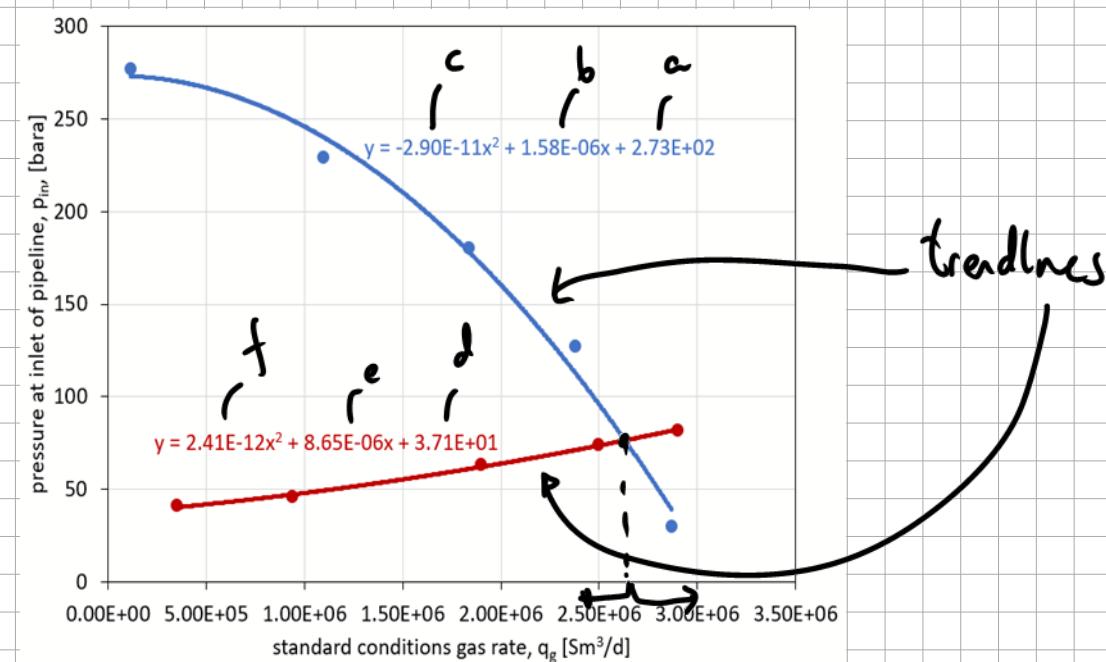
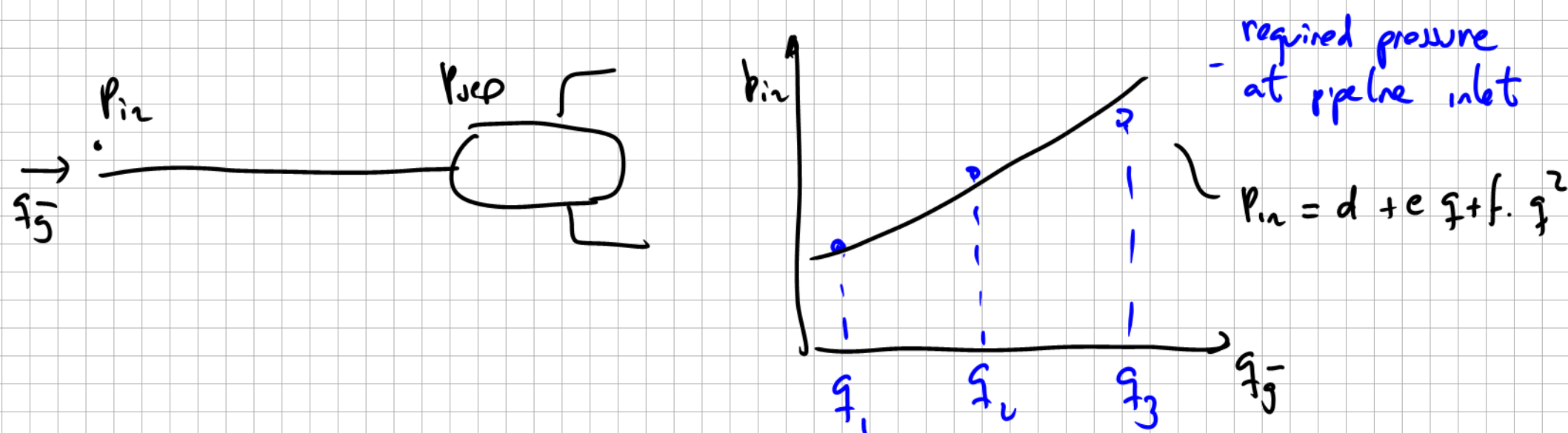
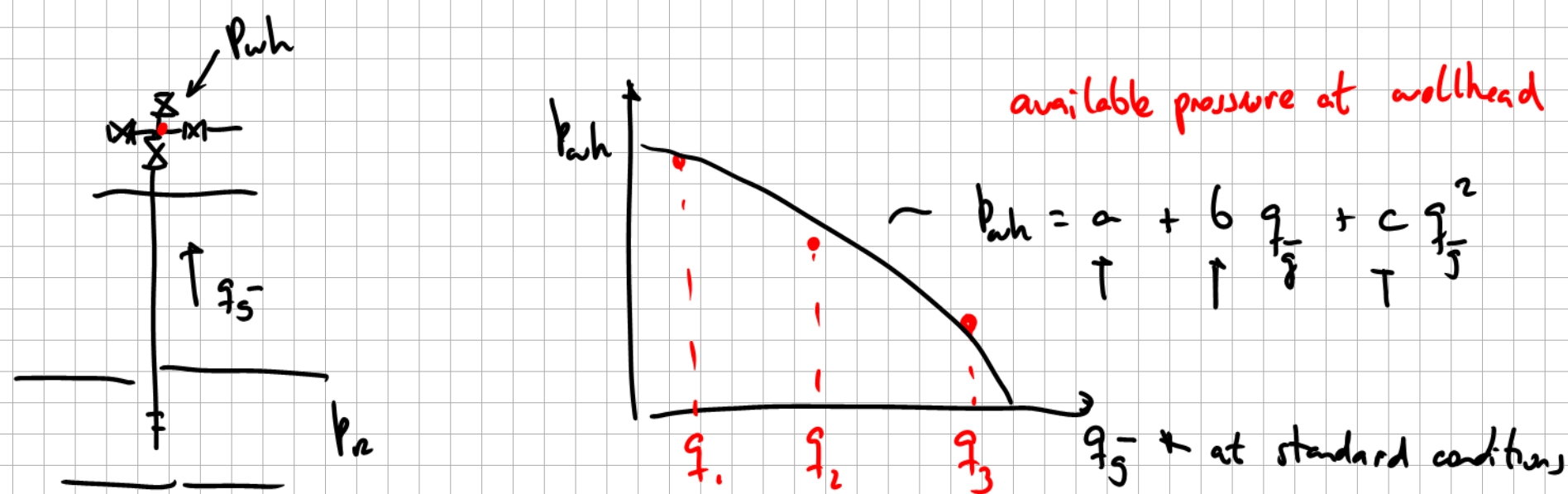


Example

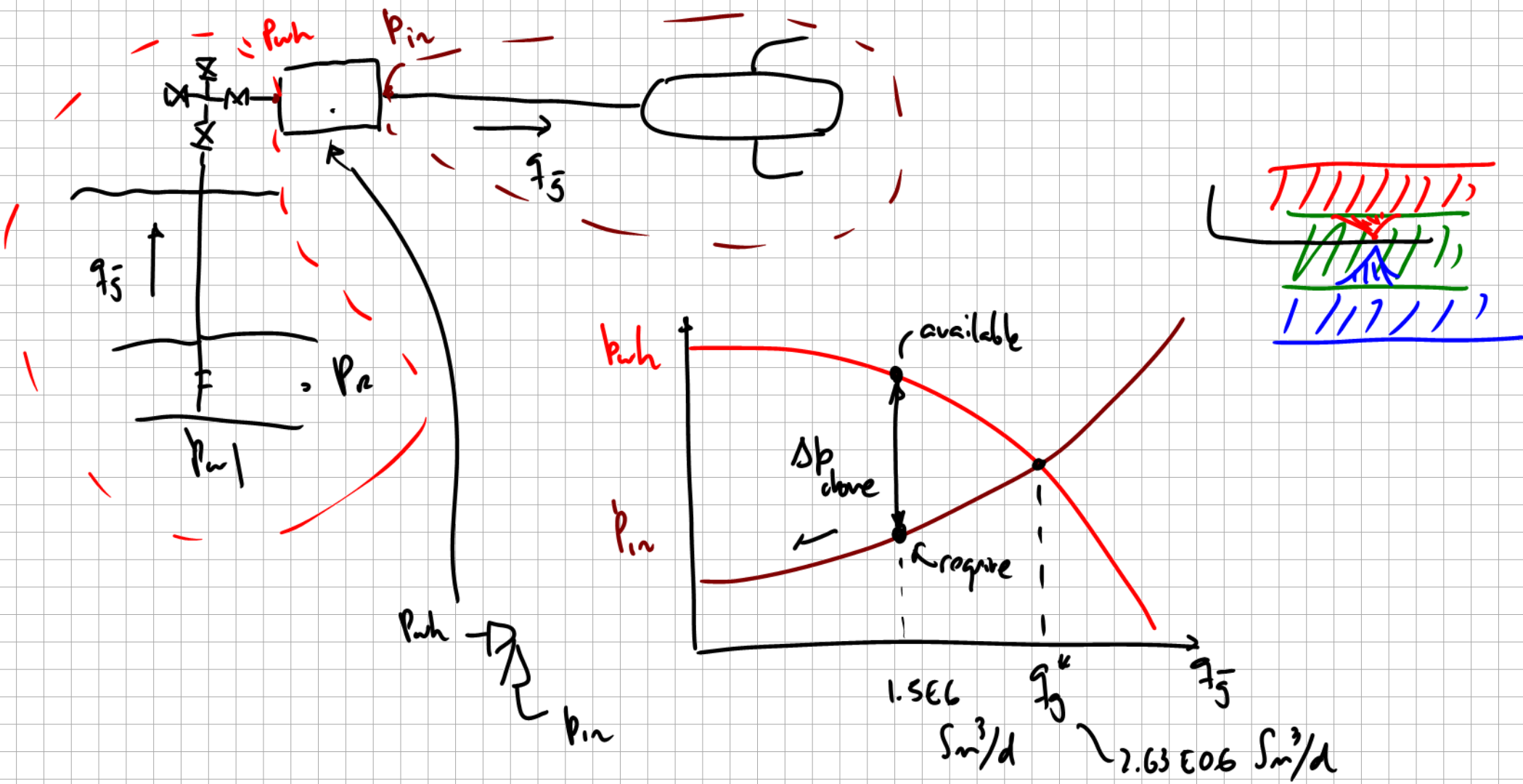
Dry gas production system



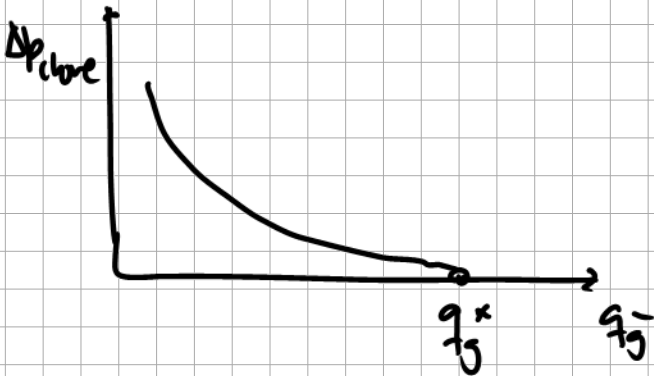
pin (available)						
c	[bara/(Sm3/d) ²]	-2.90E-11				
b	[bara/Sm3/d]	1.58E-06				
a	[bara]	2.73E+02				
pin(required)			qg	pin (av)	pin(req)	error
f	[bara/(Sm3/d) ²]	2.41E-12	[Sm3/d]	[bara]	[bara]	[bara]
e	[bara/Sm3/d]	8.65E-06	2.63E+06	76.5	76.5	0.0
d	[bara]	3.71E+01				

equilibrium gas rate

$P_{in} = 76.5$ bara



qg	p _{wh} (av)	p _{in} (req)	Deltap
[Sm3/d]	[bara]	[bara]	[bar]
1.50E+06	210.1	55.5	-154.6



what if i need a rate higher than equilibrium



required > avail
energy must be
given to fluid

I desire to produce $2.8 \text{ E}06 \text{ Sm}^3/\text{d}$

qg	p _{wh} (av)	p _{in} (req)	Deltap
[Sm3/d]	[bara]	[bara]	[bar]
2.80E+06	50.1	80.2	30.2

cell head
delta p to be provided by compressor