

Shear wave singularities in tilted orthorhombic media

Yuriy Ivanov* and Alexey Stovas

Norwegian University of Science and Technology (NTNU)
Department of Petroleum Engineering & Applied Geophysics
E-mail: yuriy.ivanov@ntnu.no

April 24th, 2017
RoSe Meeting
Trondheim, Norway



Outline

Introduction

- Overview and motivation

Theory

- S-wave singularities

- Traveltime parameters

Conclusions

Acknowledgments

References

Background

Objectives

→ Occurrence of singularities in ORT media,

Background

Objectives

- Occurrence of singularities in ORT media,
- Traveltime parameters in the vicinity of singularity points.

Background

S-wave propagation complexity¹

→ Non-separable quasi-shear waves (in symmetries lower than hexagonal),

¹Crampin (1981, 1991); Vavryčuk (2003a); Grechka (2015)

Background

S-wave propagation complexity¹

- Non-separable quasi-shear waves (in symmetries lower than hexagonal),
- Presence of singularity points,

¹Crampin (1981, 1991); Vavryčuk (2003a); Grechka (2015)

Background

S-wave propagation complexity¹

- Non-separable quasi-shear waves (in symmetries lower than hexagonal),
- Presence of singularity points,
- Multipathing and wavefront caustics,

¹Crampin (1981, 1991); Vavryčuk (2003a); Grechka (2015)

Background

S-wave propagation complexity¹

- Non-separable quasi-shear waves (in symmetries lower than hexagonal),
- Presence of singularity points,
- Multipathing and wavefront caustics,
- Rapid polarization variations.

¹Crampin (1981, 1991); Vavryčuk (2003a); Grechka (2015)

Background

S-wave propagation complexity¹

- Non-separable quasi-shear waves (in symmetries lower than hexagonal),
- Presence of **singularity points**,
- Multipathing and wavefront caustics,
- Rapid polarization variations.

¹Crampin (1981, 1991); Vavryčuk (2003a); Grechka (2015)

Background

S-wave singularities

Crampin (1991):

“In all anisotropic solids, there are directions of propagation, known as shear-wave singularities, where the split shear-waves have the same phase-velocities.”

S-waves peculiarities

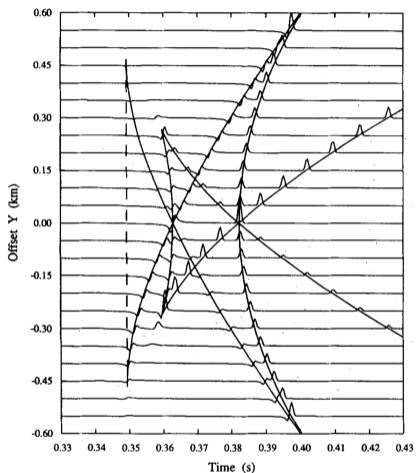


Figure 1: Synthetic seismogram in the vicinity of a singularity in an olivine sample (from Rümpker and Thomson, 1994).

Background and motivation

Why study S-wave singularities?

→ Modelling¹,

¹Vavryčuk (2001)

Background and motivation

Why study S-wave singularities?

- Modelling¹,
- Microseismic monitoring².

¹Vavryčuk (2001)

²Vavryčuk (2013); Grechka (2015)

S-wave singularities classification

Three types¹:

¹Crampin (1981)

S-wave singularities classification

Three types¹:

1. Touch (kiss) singularity: VTI on-axis singularity,

¹Crampin (1981)

S-wave singularities classification

Three types¹:

1. Touch (kiss) singularity: VTI on-axis singularity,
2. Line singularity: VTI off-axis singularity

¹Crampin (1981)

S-wave singularities classification

Three types¹:

1. Touch (kiss) singularity: VTI on-axis singularity,
2. Line singularity: VTI off-axis singularity
3. Point singularity (conical point, acoustic axis): orthorhombic and lower symmetry media.

¹Crampin (1981)

S-wave singularities classification

Three types¹:

1. Touch (kiss) singularity: VTI on-axis singularity,
2. Line singularity: VTI off-axis singularity
3. **Point singularity (conical point, acoustic axis)**: orthorhombic and lower symmetry media.

¹Crampin (1981)

S-wave singularities

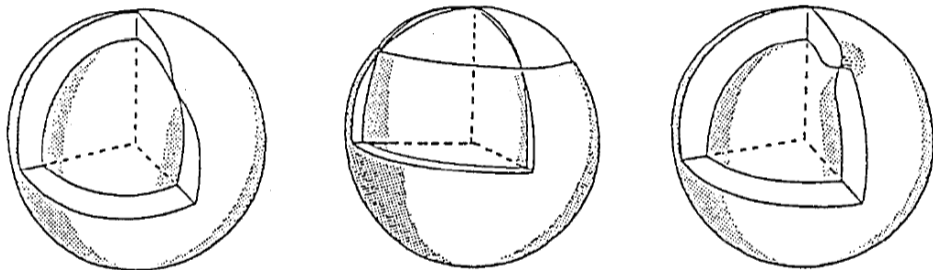


Figure 2: From left: kiss, line, and point singularities (scale is exaggerated). From Crampin (1991).

S-wave singularities

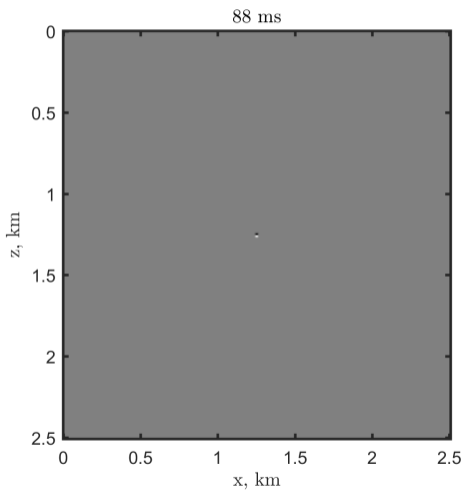
Point singularity

Courtesy of Mike Naylor



What is a medium's complexity?

Wavefronts

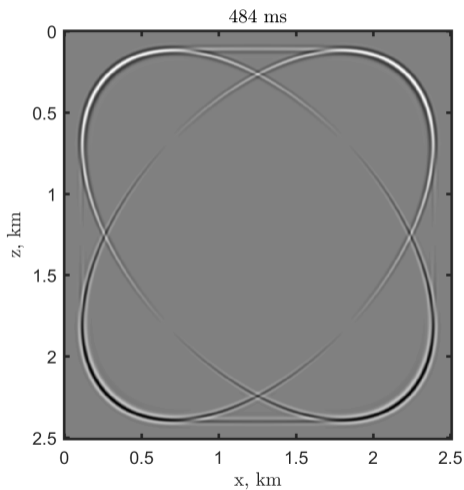


What is a medium's complexity?

Wavefronts

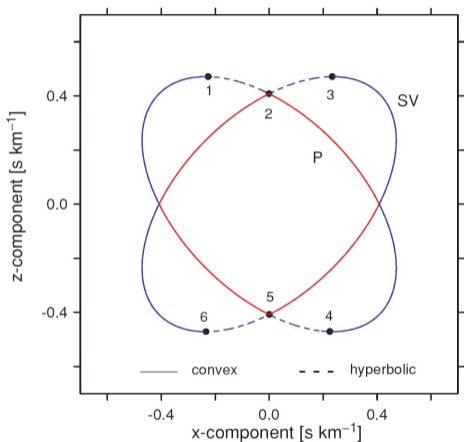
What is a medium's complexity?

Wavefronts



Restricted VTI¹

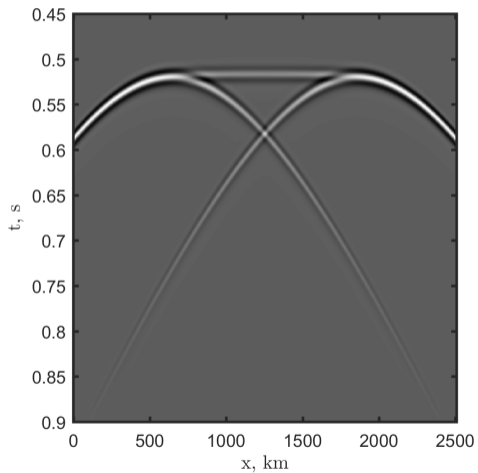
Slowness surface²

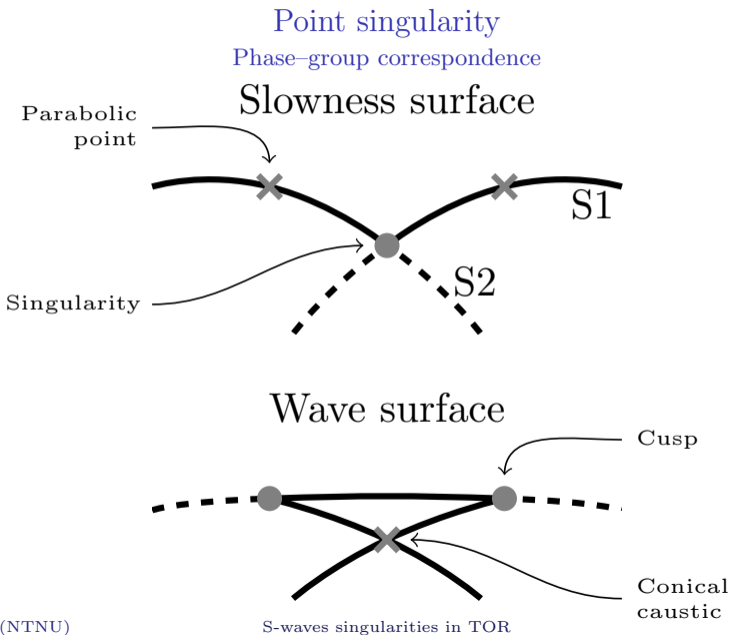


¹Payton (1992)

²Vavryčuk (2003b)

Restricted VTI Recording





Conical points in orthorhombic media

- Maximum allowed number¹: 16: 4×each plane + 4×outside,

¹Musgrave (1985)

Conical points in orthorhombic media

- Maximum allowed number¹: 16: 4×each plane + 4×outside,
- Minimum²: 0.

¹Musgrave (1985)

²Alshits and Lothe (1979)

Conical points in orthorhombic media

Perturbation of ISO media to ORT

$$c_{ijkl}^{(\text{ORT})} = c_{ijkl}^{(\text{ISO})} + \varepsilon \tilde{c}_{ijkl}^{(\text{ORT})}, \quad (1)$$

Conical points in orthorhombic media

Perturbation of ISO media to ORT

$$c_{ijkl}^{(\text{ORT})} = c_{ijkl}^{(\text{ISO})} + \varepsilon \tilde{c}_{ijkl}^{(\text{ORT})}, \quad (1)$$

$$\lambda = \mu = 1 \text{ in } c_{ijkl}^{(\text{ISO})},$$

Conical points in orthorhombic media

Perturbation of ISO media to ORT

$$c_{ijkl}^{(\text{ORT})} = c_{ijkl}^{(\text{ISO})} + \varepsilon \tilde{c}_{ijkl}^{(\text{ORT})}, \quad (1)$$

$\lambda = \mu = 1$ in $c_{ijkl}^{(\text{ISO})}$,

$\varepsilon \propto$ the anisotropy strength,

Conical points in orthorhombic media

Perturbation of ISO media to ORT

$$c_{ijkl}^{(\text{ORT})} = c_{ijkl}^{(\text{ISO})} + \varepsilon \tilde{c}_{ijkl}^{(\text{ORT})}, \quad (1)$$

$\lambda = \mu = 1$ in $c_{ijkl}^{(\text{ISO})}$,

$\varepsilon \propto$ the anisotropy strength,

$\tilde{c}_{ijkl}^{(\text{ORT})}$ is generated randomly (10^5 samples).

Conical points in orthorhombic media

Perturbation of ISO media to ORT

$$c_{ijkl}^{(\text{ORT})} = c_{ijkl}^{(\text{ISO})} + \varepsilon \tilde{c}_{ijkl}^{(\text{ORT})}, \quad (1)$$

$\lambda = \mu = 1$ in $c_{ijkl}^{(\text{ISO})}$,

$\varepsilon \propto$ the anisotropy strength,

$\tilde{c}_{ijkl}^{(\text{ORT})}$ is generated randomly (10^5 samples).

All the singularity directions are found¹.

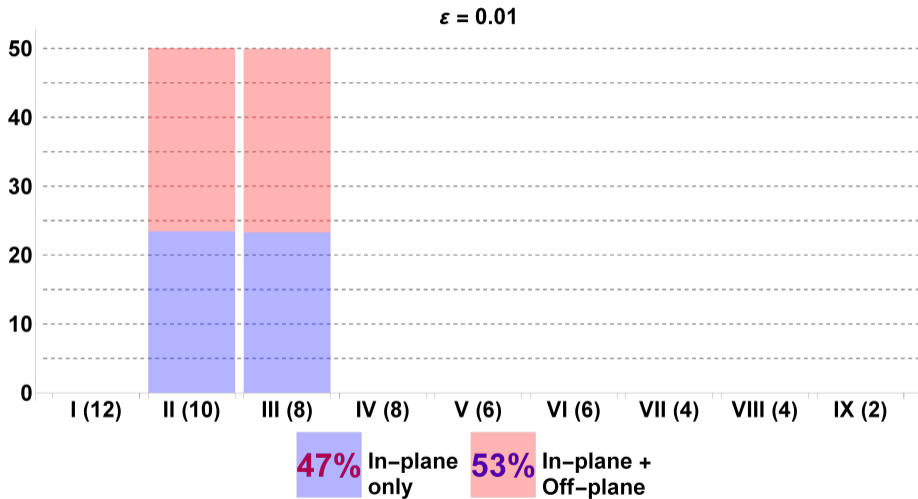
¹Boulangier and Hayes (1998)

Conical points in orthorhombic media

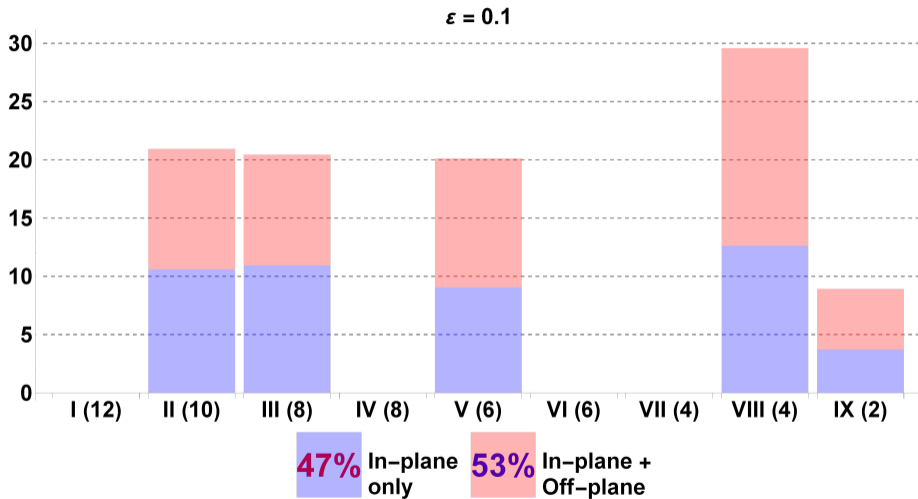
In-plane singularities: distribution classes

Class	X	Y	Z	Multiplicity	Total # of in-plane S
I	2	2	2	1	12
II	1	2	2	3	10
III	1	1	2	3	8
IV	0	2	2	3	8
V	0	1	2	6	6
VI	1	1	1	1	6
VII	0	0	2	3	4
VIII	0	1	1	3	4
IX	0	0	1	3	2

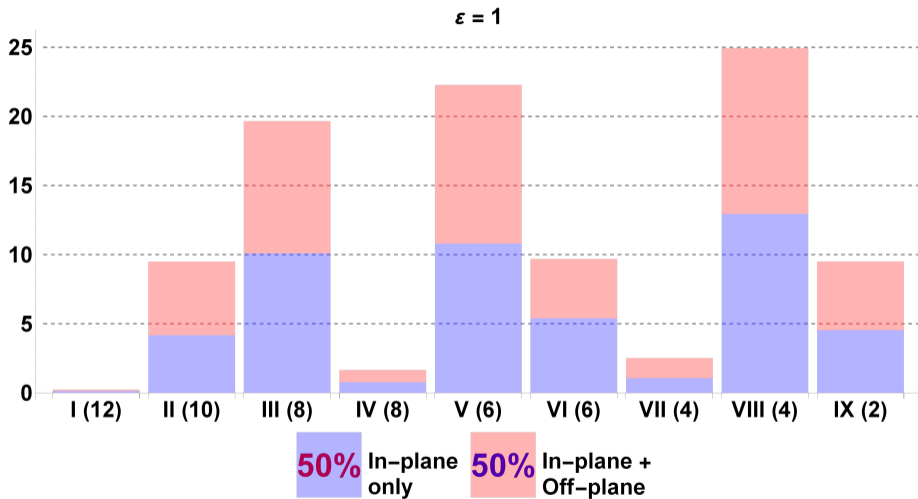
Conical points distribution



Conical points distribution



Conical points distribution



Conical points distribution

Dependence on the perturbation magnitude¹

$$c_{ijkl}^{(\text{ORT})} = c_{ijkl}^{(\text{ISO})} + \varepsilon \tilde{c}_{ijkl}^{(\text{ORT})}, \quad (2)$$

¹Vavryčuk (2005)

Conical points distribution

Dependence on the perturbation magnitude¹

$$c_{ijkl}^{(\text{ORT})} = c_{ijkl}^{(\text{ISO})} + \varepsilon \tilde{c}_{ijkl}^{(\text{ORT})}, \quad (2)$$

$$\varepsilon \in [-1000, 1000],$$

¹Vavryčuk (2005)

Conical points distribution

Dependence on the perturbation magnitude¹

$$c_{ijkl}^{(\text{ORT})} = c_{ijkl}^{(\text{ISO})} + \varepsilon \tilde{c}_{ijkl}^{(\text{ORT})}, \quad (2)$$

$$\varepsilon \in [-1000, 1000],$$

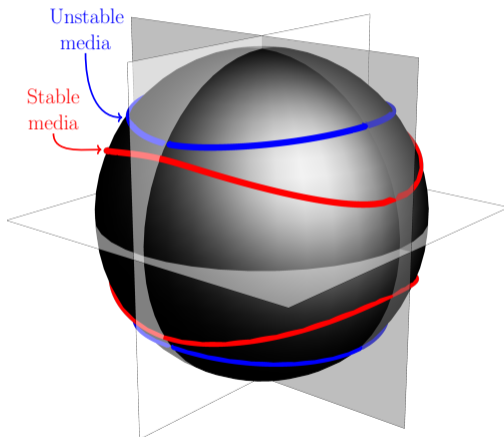
$$\tilde{c}_{ijkl}^{(\text{ORT})} = \begin{bmatrix} -0.4117 & 0.4118 & 0.5525 & 0 & 0 & 0 \\ 0.4118 & 0.6576 & 0.6092 & 0 & 0 & 0 \\ 0.5525 & 0.6092 & -0.7989 & 0 & 0 & 0 \\ 0 & 0 & 0 & 0.8755 & 0 & 0 \\ 0 & 0 & 0 & 0 & 0.1565 & 0 \\ 0 & 0 & 0 & 0 & 0 & -0.1606 \end{bmatrix}$$

Only off-planes singularity directions are considered.

¹Vavryčuk (2005)

Conical points distribution

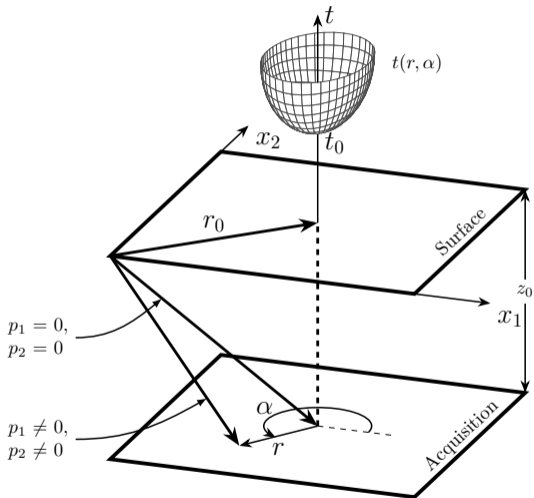
Dependence on the perturbation magnitude¹



¹Vavryčuk (2005)

Traveltime parameters.

The one-way propagation



The one-way propagation

Traveltime expansion about its minimum

$$t^2(r, \alpha) = t_0^2 + \frac{1}{V_n^2(\alpha)} r^2 + \dots, \quad (3)$$

The one-way propagation Traveltime expansion about its minimum

$$t^2(r, \alpha) = t_0^2 + \frac{1}{V_n^2(\alpha)} r^2 + \dots, \quad (3)$$

The traveltime minimum,

The one-way propagation Traveltime expansion about its minimum

$$t^2(r, \alpha) = t_0^2 + \frac{1}{V_n^2(\alpha)} r^2 + \dots, \quad (3)$$

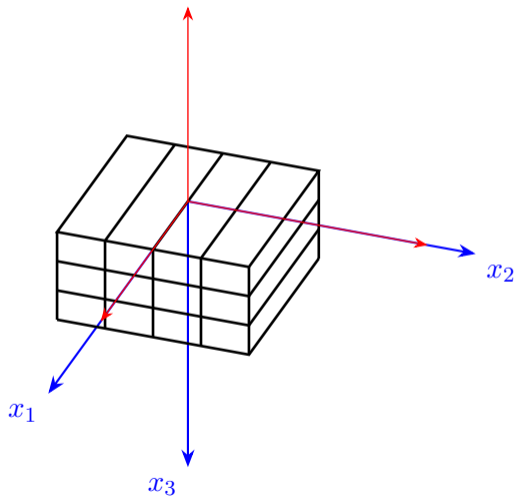
The traveltime minimum,

The normal moveout (NMO) velocity ellipse.

What if the orthorhombic symmetry planes are tilted?

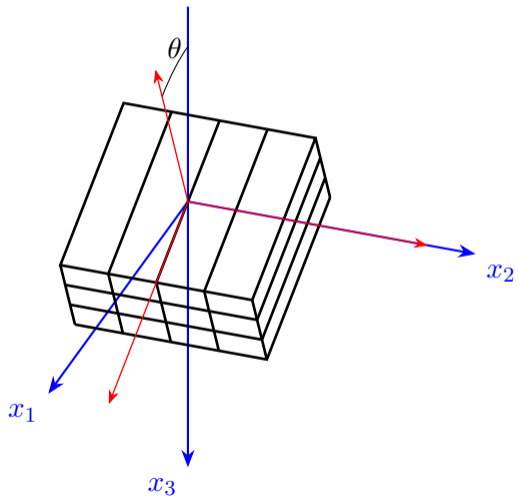
Conical points in tilted orthorhombic media

Euler's angles θ and ψ



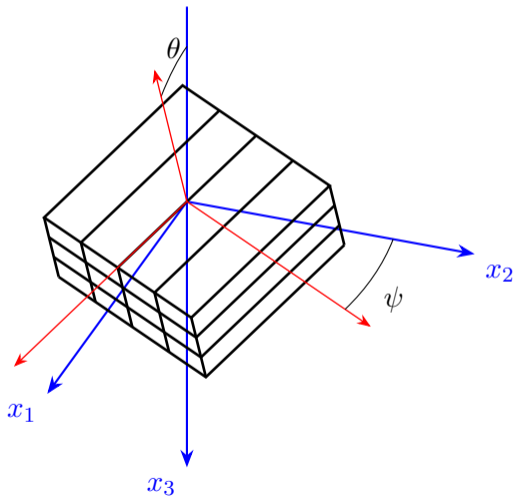
Conical points in tilted orthorhombic media

Euler's angles θ and ψ



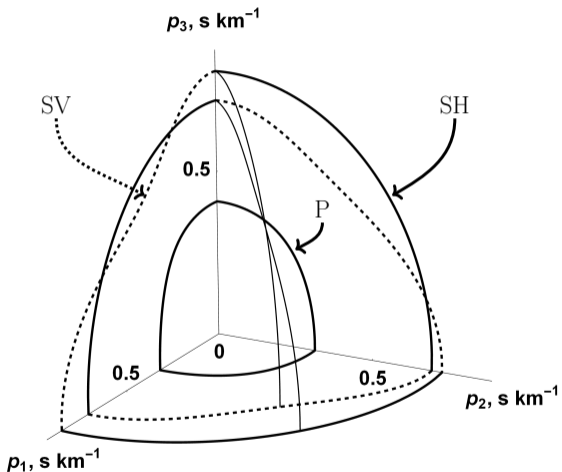
Conical points in tilted orthorhombic media

Euler's angles θ and ψ



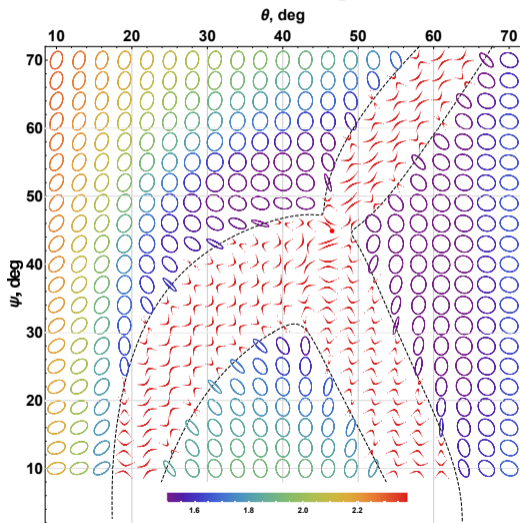
The traveltimes parameters

The ORT model



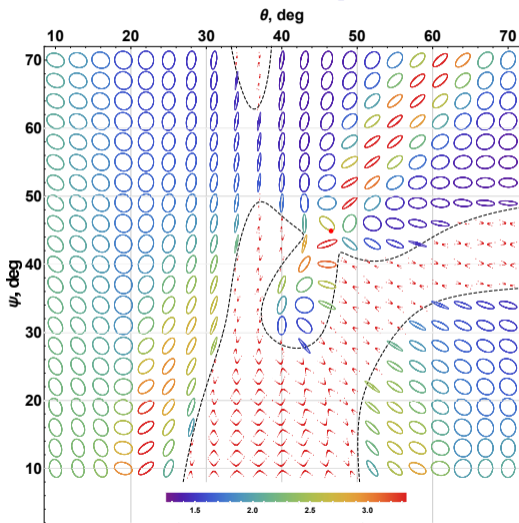
The traveltime parameters

The S1 NMO ellipse



The traveltime parameters

The S2 NMO ellipse



The traveltimes parameters

The NMO ellipse

Higher-order traveltimes parameters are also considered¹

¹Ivanov and Stovas (2017)

Conclusions

1. Weak anisotropy \rightarrow plenty of the point singularities,

Conclusions

1. Weak anisotropy \rightarrow plenty of the point singularities,
2. Singularity directions form closed lines as a function of ε ,

Conclusions

1. Weak anisotropy \rightarrow plenty of the point singularities,
2. Singularity directions form closed lines as a function of ε ,
3. The travelttime parameters are strongly affected (even outside the hyperbolic region),

Conclusions

1. Weak anisotropy \rightarrow plenty of the point singularities,
2. Singularity directions form closed lines as a function of ε ,
3. The travelttime parameters are strongly affected (even outside the hyperbolic region),
4. Potential use of the singularities for microseismic inversion¹?

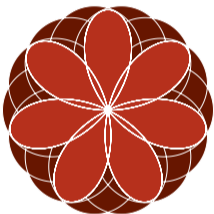
Conclusions

1. Weak anisotropy \rightarrow plenty of the point singularities,
2. Singularity directions form closed lines as a function of ε ,
3. The travelttime parameters are strongly affected (even outside the hyperbolic region),
4. Potential use of the singularities for microseismic inversion¹?

¹Vavryčuk (2013, “Inversion for weak triclinic anisotropy from acoustic axes.”)

Acknowledgments

Authors are thankful to the ROSE project for the financial support.



Thanks for your attention.

References I

- Alshits, V., and J. Lothe, 1979, Elastic waves in triclinic crystals. II. Topology of polarization fields and some general theorems: *Soviet Physics, Crystallography*, **24**, 393–398. (originally in Russian, 1978, *Crystallography*, 24, 683–693).
- Boulanger, P., and M. Hayes, 1998, Acoustic axes for elastic waves in crystals: theory and applications: *Proceedings of the Royal Society of London A: Mathematical, Physical and Engineering Sciences*, **454**, 2323–2346.
- Crampin, S., 1981, A review of wave motion in anisotropic and cracked elastic-media: *Wave Motion*, **3**, 343–391.
- , 1991, Effects of point singularities on shear-wave propagation in sedimentary basins: *Geophysical Journal International*, **107**, 531–543.
- Grechka, V., 2015, Shear-wave group-velocity surfaces in low-symmetry anisotropic media: *Geophysics*, **80**, C1–C7.
- Ivanov, Y., and A. Stovas, 2017, Shear wave singularities in tilted orthorhombic media: *Geophyscis*, **82**, 1–11. (Forthcoming).
- Musgrave, M. J. P., 1985, Acoustic Axes in Orthorhombic Media: *Proceedings of the Royal Society of London A: Mathematical, Physical and Engineering Sciences*, **401**, 131–143.

References II

- Payton, R. G., 1992, Wave Propagation in a Restricted Transversely Isotropic Elastic Solid Whose Slowness Surface Contains Conical Points: *The Quarterly Journal of Mechanics and Applied Mathematics*, **45**, 183–197.
- Rümpker, G., and C. J. Thomson, 1994, Seismic-waveform effects of conical points in gradually varying anisotropic media: *Geophysical Journal International*, **118**, 759–780.
- Vavryčuk, V., 2001, Ray tracing in anisotropic media with singularities: *Geophysical Journal International*, **145**, 265–276.
- , 2003a, Behavior of rays near singularities in anisotropic media: *Physical Review B*, **67**, 054105.
- , 2003b, Parabolic lines and caustics in homogeneous weakly anisotropic solids: *Geophysical Journal International*, **152**, 318–334.
- , 2005, Acoustic axes in triclinic anisotropy: *The Journal of the Acoustical Society of America*, **118**, 647–653.
- , 2013, Inversion for weak triclinic anisotropy from acoustic axes: *Wave Motion*, **50**, 1271–1282.