

Pre-opening of the new Schlumberger Geo-Computing Lab

Petrel course for students taught by Stephan Moroschan, Schlumberger



Petrel course for students taught by Stephan Moroschan in the new Schlumberger Geo-Computing Lab



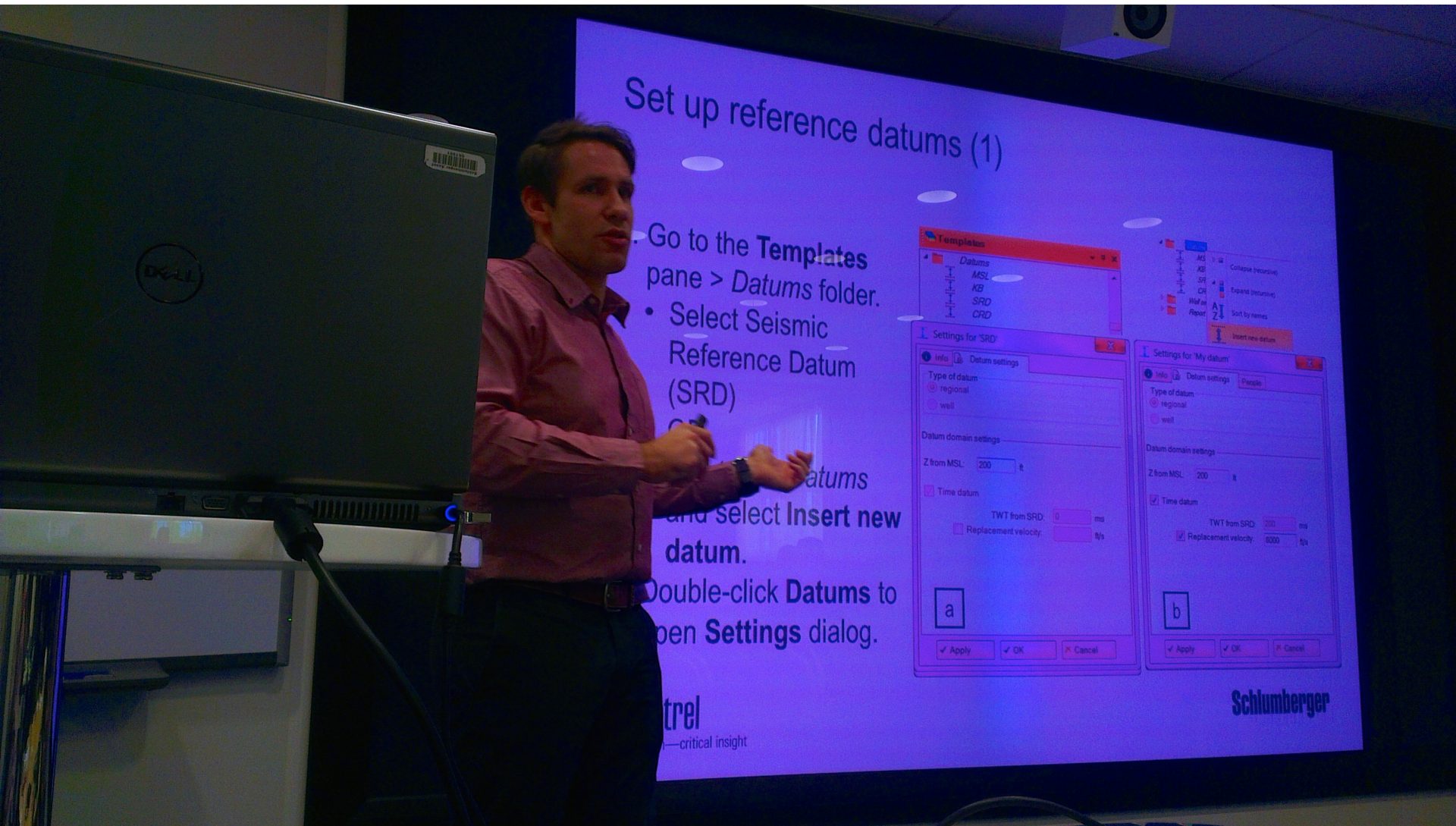
Petrel course for students taught by Stephan Moroschan in the new Schlumberger Geo-Computing Lab



Petrel course for students taught by Stephan Moroschan in the new Schlumberger Geo-Computing Lab



Petrel course for students taught by Stephan Moroschan in the new Schlumberger Geo-Computing Lab



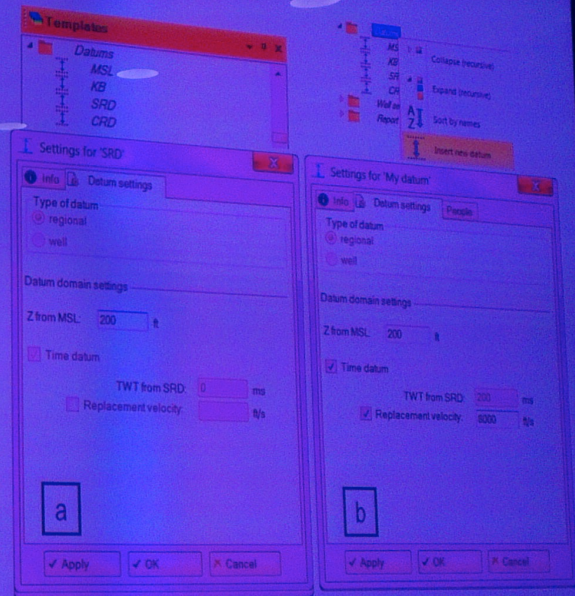
Set up reference datums (1)

Go to the **Templates** pane > *Datums* folder.

- Select Seismic Reference Datum (SRD)

Double-click *Datums* and select **Insert new datum**.

Double-click **Datums** to open **Settings** dialog.



Petrel course for students taught by Stephan Moroschan in the new Schlumberger Geo-Computing Lab

