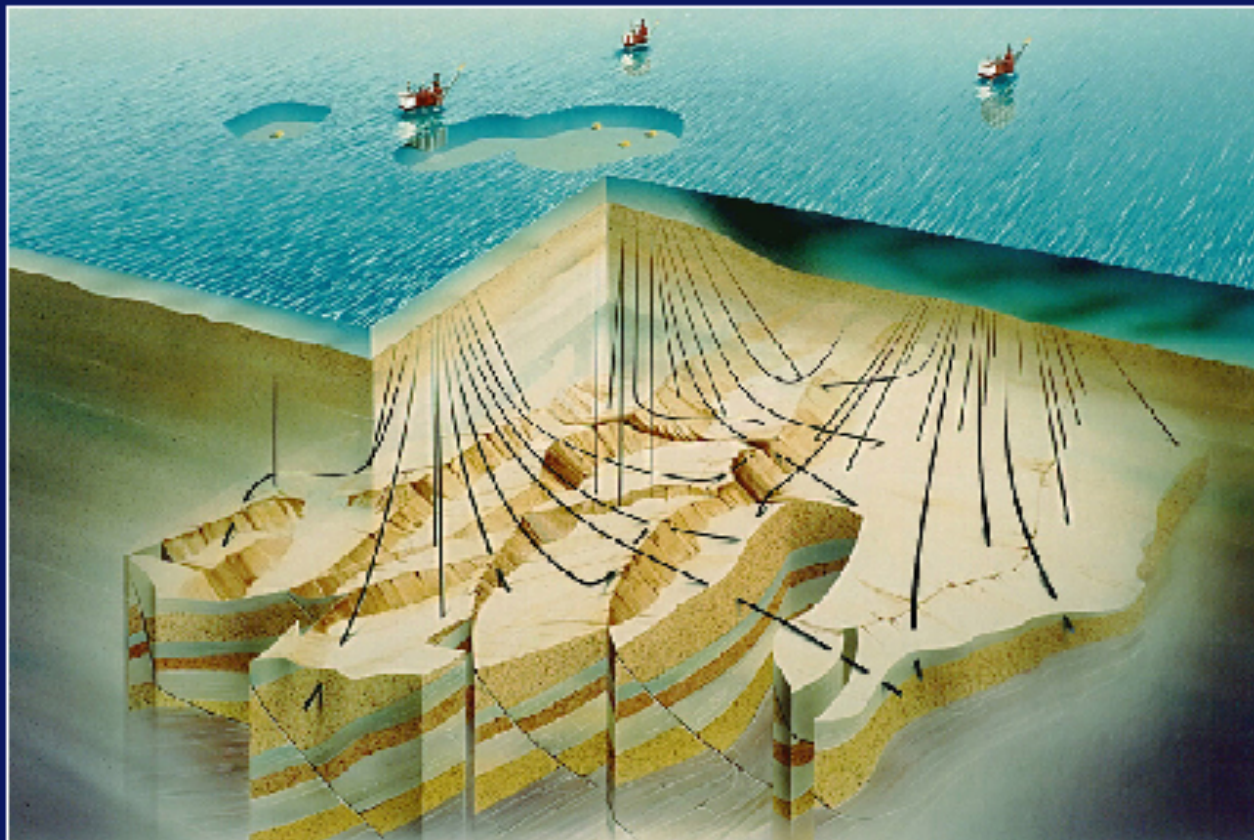


GULLFAKS VILLAGE₂₀₁₀

GULLFAKS VILLAGE₂₀₁₀

Gullfaks Field



GULLFAKS VILLAGE₂₀₁₀

Objective

*How to extract 10% more oil
from the Gullfaks Field*

GULLFAKS VILLAGE₂₀₁₀

External partner

*The Gullfaks license in Bergen
(Statoil)*

GULLFAKS VILLAGE₂₀₁₀

Agenda 13.1.10

0900 Coffee

0915 Welcome by the Village Leader Jon Kleppe

- ❖ Introduction to the Gullfaks Village, presentation of the involved staff , "rules of the Village", milestones, etc.

1000 Short break

**1015 Introduction to group processes by the Learning Assistants
Ida and Daniel**

1100 Short break

1115 Split students into groups, get acquainted exercise

1200 Joint lunch

GULLFAKS VILLAGE₂₀₁₀

Agenda 13.1.10 (cont'd)

1300 **More "get acquainted" exercises**

1430 **Writing of log for the day**

1500 ***Bus to Heimdal***

❖ ***Team-building (Bowling/GoCart)***

1930 ***Bus to Mikrobryggeriet***

❖ ***Team-building***

GULLFAKS VILLAGE₂₀₁₀

Students

Ang	Lorena Rachelle P	GasTech
Bhandari	Ashish	Cybernetics
Borlaug	Terje	GasTech
Buberg	Tor Arne	Materials
Chawshin	Kurdistan	PetGeo
Ghorbaniyan	Masoud	GasTech
Haaland	Stian Schjelderup	PetTech
Hasanov	Bashir	PetTech
Hegde	Pratima	ProjMgmt
Hemmingsen	Nathalie	PetGeo
Islam	Md. Saiful	PetTech
Ita	Eyamba	GasTech
Jacobsen	Katrin	MechEng
Johnsen	Ingebjørg	PetTech
Jørgensen	Therese	PetGeo
Kanu	Elizabeth	GasTech
Kristensen	Iina Caroline	PetGeo
Maalø	Kristian	MarineTech
Maheshwari	Yugal Kishore	PetTech
Marashi	Seid Ehsan	GasTech
Nafikov	Rustem Rimovich	PetTech
Nazir	Ahsin	ChemEng
Poernomo	David	CivilEng
Puspa Handayani	Niken	CivilEng
Ramazany	Saeed	ProjMgmt
Rehman	Ubaid Ur	ProjMgmt
Rossing	Marit	PetGeo
Schindler	Uwe Werner Helmut	ProjMgmt
Shakernia	Alireza	ProjMgmt
Sirimongkolrat	Saran	PetTech
Susanto	Ria	PetTech
Vasquez	Ivana Jose Maza	PetTech

GULLFAKS VILLAGE₂₀₁₀

Project advisors at NTNU

Village Leader

❖ *Jon Kleppe*

Learning Assistants

❖ *Ida Aasen*

❖ *Daniel Solheim*

Project advisors at NTNU

❖ *Knut Backe*

❖ *Martin Landrø*

❖ *Sigbjørn Sangesland*

❖ *Ole Torsæter*

❖ *Jan Ivar Jensen*

❖

❖

GULLFAKS VILLAGE₂₀₁₀

Project advisors at Statoil

❖ *Petter Eltvik*

❖ *Johan Eck-Olsen*

❖ *Knut Müller*

❖

❖

GULLFAKS VILLAGE₂₀₁₀

Second Village Day 20.1.10

- 0900 Statoil presents challenges related to the Gullfaks South segment**
- 1200 Joint lunch**
- 1300 Group discussions**
- 1430 Writing of logs**
- 1500 Short Course in using Eclipse simulation model**
- 1700 End**

GULLFAKS VILLAGE₂₀₁₀

Typical Village Day (Wednesday)

09⁰⁰	<i>Morning Meeting (mandatory)</i> ❖ <i>Info, common issues, status reports by groups</i>
09³⁰ - 11³⁰	<i>Project meetings in groups</i> ❖ <i>LA & LL will visit groups</i>
11³⁰ - 12⁰⁰	<i>Writing of logs</i>
12⁰⁰ - 12³⁰	<i>Lunch</i>
12³⁰ - 14⁰⁰	<i>Group work</i>
14⁰⁰ - 15⁰⁰	<i>Plenum session</i>
15⁰⁰ - 19⁰⁰	<i>More group work?</i>

GULLFAKS VILLAGE₂₀₁₀

Preliminary mile stones

Each group will develop its own mile stones, however, a few joint mile stones are:

January 13th: Introduction, "get acquainted"

January 20th: Statoil presents possible group projects

March 3rd: Visit to Statoil in Bergen

18. mars: Midtsemesterpresentasjon

April 21th: Final presentations, including posters

April 28th: Deadline for reports

GULLFAKS VILLAGE₂₀₁₀

Group projects

Initially each group will work with identical projects, with objective of getting acquainted with the Gullfaks South Segment. Key element will be data available from the Gullfaks Data Base, the Reservoir Management Plan for the Gullfaks Field, reservoir simulation cases using the Eclipse model. Short courses will be arranged by demand by the groups. After around three weeks each group will select specialization projects based on the presentation by Statoil the second day. Final projects description will be prepared after the visit to Bergen.

GULLFAKS VILLAGE₂₀₁₀

Groups

Group 1					
Ang	Lorena Rachelle P	✓ 45638461	ang@stud.ntnu.no	GasTech	away day 1
Rossing	Marit	✓ 93013118	mariros@stud.ntnu.no	PetGeo	
Haaland	Stian Schjelderup	✓ 92266442	stiansch@stud.ntnu.no	PetTech	
Ramazany	Saeed	✓ 41180736	ramazany@stud.ntnu.no	ProjMgmt	
Nazir	Ahsin	✓ 96806842	nazir@stud.ntnu.no	ChemEng	
Hasanov	Bashir	✓ 94102615	hasanov@stud.ntnu.no	PetTech	
Group 2					
Ita	Eyamba	✓ 96835096	ita@stud.ntnu.no	GasTech	
Kristensen	Iina Caroline	✓ 91129103	iinacaro@stud.ntnu.no	PetGeo	in hospital day 1
Islam	Md. Saiful	✓ 96828102	mdsaiful@stud.ntnu.no	PetTech	
Rehman	Ubaid Ur	96846137	ubaidur@stud.ntnu.no	ProjMgmt	
Maalø	Kristian	✓ 92220207	kristma@stud.ntnu.no	MarineTech	
Nafikov	Rustem Rimovich	✓ 47153412	nafikov@stud.ntnu.no	PetTech	
Group 3					
Kanu	Elizabeth	✓ 96833494	kanu@stud.ntnu.no	GasTech	
Johnsen	Ingebjørg	✓ 95119614	ingebjo@stud.ntnu.no	PetTech	
Chawshin	Kurdistan	✓ 45802375	chawshin@stud.ntnu.no	PetGeo	
Schindler	Uwe Werner Helmut	✓ 40332004	schindle@stud.ntnu.no	ProjMgmt	
Buberg	Tor Arne	✓ 92697442	buberg@stud.ntnu.no	Materials	

GULLFAKS VILLAGE₂₀₁₀

Groups

Group 4				
Jacobsen	Katrin	90553475	katrinja@stud.ntnu.no	MechEng PetTech PetTech GasTech Cybernetics
Susanto	Ria	40381094	susanto@stud.ntnu.no	
Sirimongkolrat	Saran	96808890	sirimong@stud.ntnu.no	
Ghorbaniyan	Masoud	45770075	ghorbani@stud.ntnu.no	
Bhandari	Ashish	98026737	ashish@stud.ntnu.no	
Group 5				
Hemmingsen	Nathalie	99155451	nathalh@stud.ntnu.no	PetGeo PetTech ProjMgmt GasTech CivilEng
Vasquez	Ivana Jose Maza		mazavasq@stud.ntnu.no	
Shakernia	Alireza	45783970	shakerni@stud.ntnu.no	
Borlaug	Terje	91691835	terjborl@stud.ntnu.no	
Puspa Handayani	Niken	40381093	puspahan@stud.ntnu.no	
Group 6				
Jørgensen	Therese	93482990	therej@stud.ntnu.no	PetGeo ProjMgmt CivilEng GasTech PetTech
Hegde	Pratima	45063466	hegde@stud.ntnu.no	
Poernomo	David	96833478	poernomo@stud.ntnu.no	
Marashi	Seid Ehsan	94224491	marashi@stud.ntnu.no	
Maheshwari	Yugal Kishore	96837341	maheshwa@stud.ntnu.no	